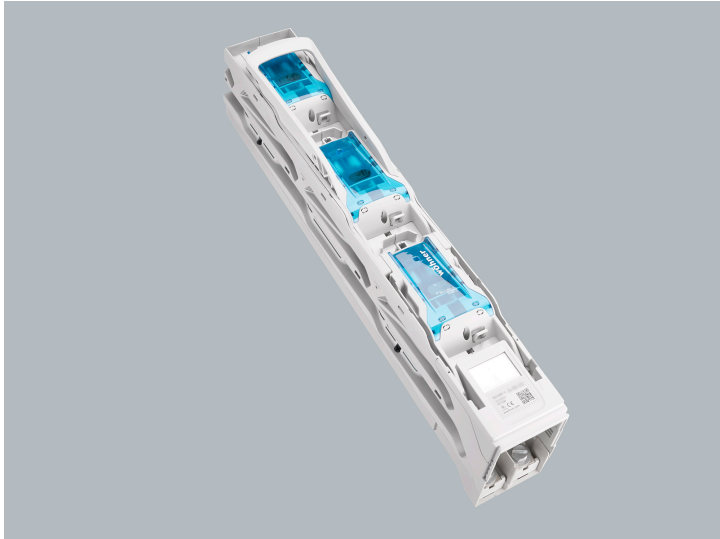


in-line fuse switch-disconnector 400 A (33569)



The picture may show a similar product.

Description

Part No.: **33569**000A

QUADRON[®] 185Power

in-line fuse switch-disconnector 400 A

size 2, 3-pole switchable

V-clamp 150 mm²

terminal body alu, pressure piece brass, XL variant

for busbars 30, 40, 60, 80, 100, 120 x 10

coming soon

System

185Power

Advantages of the product

Self-closing inspection holes are available in the cover.

Cover can be locked when closed.

Product group 12

Subgroup 54

pack size 1
EAN 4021267335694

ECLASS 6.1 27142108
ECLASS 7.1 27142108
ETIM 4.0 EC001046
ETIM 5.0 EC001046

Approvals

Standards

IEC 60947-1:2020
IEC 60947-3:2020 AC ratings only

Approvals

IEC (CB) , CCC



type number: QU185-2

CCC certificate: 2015010302769224

Technical data

for fuse links size:	NH 2
fuse links acc. to standard:	IEC / HD 60269-2
permitted power dissipation of the fuse-link:	34 W
requirements for contact parts:	Fuse links with silver-plated contact pieces recommended. For fuse links with nickel-plated contact pieces, a reduction factor of 0.8 is to be observed.

Details IEC

Standards

IEC 60947-1:2020
IEC 60947-3:2020 AC ratings only

Electrical data IEC

Rated current (IEC): 400 A

rated voltage (IEC) AC: 800 V

rated isolation voltage U_i AC: 1000 V

rated surge voltage U_{imp} : 8 kV

Utilisation category AC AC-23B 400A/400V

(IEC 60947-3): AC-22B 400A/500V

AC-22B 400A/690V

AC-21B 400A/690V

AC-20B / 800 V

rated current according to the available fuse links, taking into account the maximum permissible power dissipation 34 W.

visible information required: Do not switch under load.

Utilisation category DC DC-20B

(IEC 60947-3): max. voltage between the fuses: 1000V

visible information required: Do not switch under load.

cond. short-circuit current with fuses (AC): 100 kA / 690 V (400 A)

120 kA / 400 V (400 A)

80 kA / 800 V (200A)

approved with fuse links of operation class: gG

power dissipation of the article:

The power dissipation at a typical load of 80 % results to 38.4 W.

(The power dissipation at full load would be 60.0 W.)

Supplementary data IEC

The following values have been verified with tests under certain conditions. Please ask Wöhner for this conditions before designing your panel.

A fuse-combination unit acc. to IEC 60947-3 can only be operated at a higher voltage than its rated voltage, if it is used as a fuse-disconnector without breaking capacity, up to its max. rated insulation voltage and labelled as such.

Besondere Betriebsbedingungen gemäß IEC / EN 61439-1 können zu Fehlauslösungen von Meldeschaltern oder Sicherungsüberwachungen führen. Die vorliegenden Betriebsbedingungen sind dementsprechend bei der Auswertung der Meldesignale zu berücksichtigen.

Degree of protection IP20 at front (see mounting instruction)

Mechanical data

W x H x D: 100 x 670 x 189

weight: 480.0 kg/100

poles: 3-pole

for busbars: 30, 40, 60, 80, 100, 120 x 10

CT can be integrated in the device: ja

CT can be integrated in the CT module: ja

front degree of protection: IP20

degree of protection when open: IP10

Type of fastening:

can be screwed onto drilled busbar, diameter 13mm, undrilled mounting with terminal clamp connection:

screw connection M12

Application notes

A fuse-combination unit acc. to IEC 60947-3 can only be operated at a higher voltage than its rated voltage, if it is used as a fuse-disconnector without breaking capacity, up to its max. rated insulation voltage and labelled as such.

Reference The terminal compartment cover 33733 is always needed for the connection at top and when using cable lugs.

permitted power 34 W

dissipation of the fuse-link:

requirements for contact Fuse links with silver-plated contact pieces recommended.

parts: For fuse links with nickel-plated contact pieces, a reduction factor of 0.8 is to be observed.

<https://pim.woehner.de/EN/EN/1000293032>